

Product list



Bionline

INDEX

INDICE

| | |
|-----------------------|-----------------------|
| t. CLINICAL CHEMISTRY | CHIMICA CLINICA |
| 2. LATEX TURBIDIMETRY | TURBIDIMETRIA LATTICE |
| 5. HEMATOLOGY | EMATOLOGIA |
| 4. COAGULATION | COAGULAZIONE |
| 5. INSTRUMENTS | STRUMENTI |



1

CLINICAL CHEMISTRY

CHIMICA CLINICA

CLINICAL CHEMISTRY

| CODE NR | DESCRIPTION | PACKAGE |
|----------|----------------------------------|----------------|
| BLALB300 | ALBUMIN Mono LR | 6x50 ml |
| BLALP250 | ALKALINE PHOSPHATASE LR | 5x40+1x50ml |
| BLAMYSO | AMYLASE Mono LR | 5X10ml |
| BLBD250 | B1L1RUBINA DIRETTA LR | 5x50ml |
| BLBT250 | B1L1RUBINA TOTALE LR | 5x50ml |
| BLCAR300 | CALCIUM ARSENAZO III Mono LR | 6X50ml |
| BLCLO200 | CHLORIDE Mono LR | 4X50ml |
| BLHDL80 | CHOLESTEROL HDL DIRECT LR | 1x60+1x20ml |
| BLLOL80 | CHOLESTEROL LDL DIRECT LR | 1x60+1x20ml |
| BLCHO300 | CHOLESTEROL TOTAL Mono LR | 6X50ml |
| BLCHESO | CHOLINESTERASE LR | 1x40+1x10ml |
| BLCKNSO | CK–NAC LR | 1x40+1x10ml |
| BLCRE300 | CREATININE LR (Picric Ac.) | 3x50+3x50ml |
| BLGGT250 | GAMMA GT LR | 5x40+1x50ml |
| BLGLU300 | GLUCOSE Mono LR | 6X50ml |
| BLGOT250 | GOT AST LR | 5x40+1x50ml |
| BLGPT250 | GPT ALT LR | 5x40+1x50ml |
| HCY30–5 | HOMOCYSTEINE LR + CAL | 1x30+1x5ml+CAL |
| BLFEF200 | IRON FERENE LR | 4x80+4x20ml |
| BLLDH50 | LDH LR | 1x40+1x10ml |
| BL41018 | LIPASE LR | 4x10+1x8ml |
| BLMEN200 | MAGNESIUM ENZYMATIc U.V. LR | 4x40+4x10ml |
| BLMAG200 | MAGNESIUM Mono LR (Xylidyt Blue) | 4X50ml |
| BLPHO200 | PHOSPHOROUS Mono LR | 4X50ml |
| BLPTO300 | TOTAL PROTEIN Mono LR | 6x50ml |
| BLTRI300 | TRIGLYCERIDES Mono LR | 6X50ml |
| BLAZO250 | UREA U.V. LR | 5x40+1x50ml |
| BLURI300 | URIC ACID LR Mono | 6X50ml |
| BLPTU200 | URINE TOTAL PROTEIN Mono LR | 4X50ml |

Controls and Calibrator for CLINICAL CHEMISTRY

| CODE NR | DESCRIPTION | PACKAGE |
|---------|-----------------------------|---------|
| 38950 | CONTROL N Human (Normal) | 4x5ml |
| 38955 | CONTROL P Human (Pathol.) | 4x5ml |
| 38960 | CALIBRATOR HUMAN | 10x3ml |

2

LATEX TURBIDIMETRY

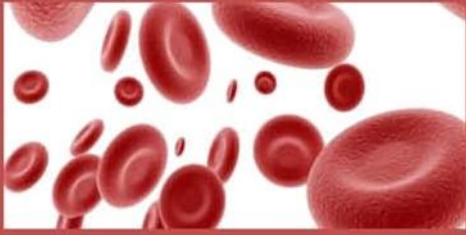
TURBIDIMETRIA LATTICE

LATEX TURBIDIMETRY

| CODE NR | DESCRIPTION | PACKAGE |
|---------|-------------------------|-------------------------|
| BLPCRSO | PCR Turbilatex | fR1 1x40ml R2 1x10mt) |
| BLASO50 | ASO Turbilatex | fR1 1x40ml R2 1x10mt) |
| BLRF50 | RF Turbilatex | fR1 1x40ml R2 1x10mt) |
| BLMALSO | MICROALBUMIN Turbilatex | (R1 1x40ml + R2 1x10ml) |

Controls and Calibrator for LATEX TURBIDIMETRY

| CODE NR | DESCRIPTION | PACKAGE |
|----------|---------------------------|-----------|
| BLPCRCAL | PCR Calibrator | (1 1ml) |
| BLASOCAL | ASO Calibrator | (1 1ml) |
| BLRFCAL | RF Calibrator | (1 2ml) |
| BLMALCAL | MICROALBUMIN Calibrator) | (1X1ml |
| BLMALCTR | PCR Calibrator | (1 1ml) |



3

HEMATOLOGY

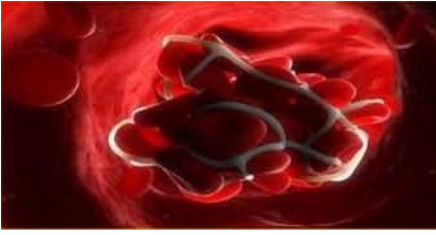
EMATOLOGIA

HEMATOLOGY REAGENTS FOR 5 DIFF. COUNTING

| CODE NR | DESCRIPTION | PACKAGE |
|--------------|-------------------|---------|
| B5D11 | DILUENT SD | 20 it |
| B5D46/20L | DETERGENT SD | 20LT |
| B5D/20L | SHEAT 5D | 20 LT |
| B5DL11 | LYSE SD | 1 LT |
| URIT R 11/12 | RETICULOCYTES KIT | 12 PS |
| URIT R 11 | RETICULOCYTES KIT | 50 PS |

HEMATOLOGY REAGENTS FOR 3 DIFF. COUNTING

| CODE NR | DESCRIPTION | PACKAGE |
|---------|---------------|---------|
| B300031 | DILUENT DIFF. | 20 Lt |
| B300042 | DETERGENT | 20 Lt |
| B300022 | LYSE DIFF. | 1 Lt |



4

COAGULATION

COAGULAZIONE

| CODE NR | DESCRIPTION | PACKAGE |
|----------|------------------------------------|----------------|
| BLPT20 | PT (Lyophilized) | 4x5ml |
| BLFIB8 | FIBRINOGEN (Lyophilized) | 4x2ml+CAL+CTRL |
| BLAPTT16 | a—PTT (Liq.) | 2x4+2x4ml |
| BLCCL6 | COAGULATION LOW CONTROL (Lyop.) | 6x1ml |
| BLCCN6 | COAGULATION NORMAL CONTROL (Lyop.) | 6x1ml |
| BLCCH6 | COAGULATION HIGH CONTROL (Lyop.) | 6x1ml |
| BLCCAL6 | COAGULATION CALIBRATOR (Lyop.) | 6x1ml |
| BLIMI100 | IMIDAZOLE-DILUENT (for Fibrinogen) | 2x50ml |
| BLKAO8 | KAOLIN (for Fibrinogen) | 8x1ml |



5

INSTRUMENTS

STRUMENTI

INSTRUMENTS

BH 300

3 Diff Hematology Analyser

Large color LCD display & Linux operation system Excellent data management with mouse and keyboard High efficient self cheking system, low maintenance

Support LIS and HIS with HL7 protocol



BH 520

5 Diff Hematology Analyser

Laser multi-dimensional cell classification Up to

60 samples per hour throughput WBC 5 part diff

Support both whole blood and capillary blood sample

Four reagents for 25 parameters



BH 530

5 Diff Hematology Analyser

Laser multi-dimensional cell classification Up to

60 samples per hour throughput WBC 5 part diff

50 Positions autoloader

Four reagents for 25 parameters



BIOSMART

Specifications

| |
|--|
| Assay method: End Point, Kinetic, Two-Point etc. |
| Principle: Photoelectric colorimetry |
| Light Source: Halogen-Tungsten lamp with long life, 12V, 20W |
| Photometry range: 0~4.0Abs |
| Wavelength: 9 wavelengths (300nm~700nm) |
| Throughput: 200 tests per hour |
| Probes: 2 probes, one for integrated reagent / sample dispense, one for mixer |
| Reagent tray: 40 reagent positions, 10~400ul, with 1ul increment |
| Sample tray: 40 sample positions, including standard, QC, STAT positions, 2~50ul, with 0.1ul increment |
| Reaction tray: 60 reusable reaction cuvettes |
| Refrigeration: Cooling by Peltier & Liquid cooling system |
| Minimum reaction volume: 180 ul |
| Clean unit: 7 - step warm water washing |
| Water Consumption: Less than 4L/hour |
| Quality Control: Quality Control program with Levy Jennings, Multiple lots, QC charts, etc. |
| Temperature control: incubator 37±0.1°C |
| Power supply: AC 100/220V, 50Hz |
| Dimension: 415mm(W) x 565mm(L) x 385mm(H) |
| Weight: 28 kgs |



BIOSMART

Specifications

| |
|---|
| Assay methods: End Point, Kinetic, Fix time etc. |
| Principle: Photoelectric colorimetry |
| Light Source: Halogen lamp 12V/20W |
| Photometry range: -0.5~6.0Abs |
| Resolution: 0.0001Abs |
| Wavelength: 10 wavelengths optional (340nm~800nm) |
| Throughput: 330tests/hour |
| Reagent tray: 59 reagent positions, 1 detergent position |
| Sample tray: 71 sample positions, including detergent, standard, QC, STAT positions |
| Reaction tray: 90 reaction cuvettes |
| Sample volume: 2ul~35ul, with 0.05ul increment |
| Reagent volume: R1:10ul~300uL, with 0.5uL increment |
| Minimum reaction volume: 150uL |
| Maximum reaction time: 14 minutes |
| Water Consumption: 8L/hour under working status |
| Clean unit: 8-step auto-washing system with detergent and 37°C water |
| Calibration: Calibration reset, select best test point by reaction curve, no need second calibration Line/non-line; multi-standards assay |
| Control rules: Westgard multi-rule, Cumulative sum check, Twin plot 3 level controls for each item, analyzing and printing QC analysis diagram |
| Temperature control: incubator 37 ± 0.1°C |
| Power supply: AC110/230(1 ± 10%)V, 50/60Hz, 500VA |
| Ambient: Operating temperature: 10~30°C Relative humidity: ≤85% Atmospheric pressure: 86~106kPa |



BIOSMART

Specifications

| |
|---|
| Assay methods: End Point, Kinetic, Fix time etc. |
| Principle: Photoelectric Colorimetry |
| Light Source: Halogen lamp 12V/20W |
| Photometry range: 0~3Abs |
| Resolution: 0.0001Abs |
| Wavelength: 12 wavelengths (340nm, 405nm, 450nm, 480nm, 505nm, 546nm, 570nm, 605nm, 660nm, 700nm, 750nm, 800nm) using grating |
| Throughput: 480 tests/hour, 720 tests/hour with ISE |
| Reagent tray: 120 reagent positions |
| Sample tray: 99sample positions, including detergent position, standard positions, QC positions, STAT positions |
| Reaction tray: 120 reaction positions |
| Sample volume: 2~100ul, with 0.1ul increment |
| Reagent volume: 5~500ul, with 0.5ul increment |
| Minimum reaction volume: 150ul |
| Maximum reaction time: 10 minutes |
| Water Consumption: less than 18 L/hour under working status |
| Clean unit: 8-steps auto-washing system |
| Calibration: Calibration reset, select best test point by reaction curve, no need second calibration |
| Control rules: Westgard multi-rule, Cumulative sum check, Twin plot |
| Temperature control: incubator 37 ± 0.1°C |
| Power supply: AC110/230(1 ± 10%)V, 50/60Hz, 500VA |
| Ambient: Operating temperature: 10~35°C Relative humidity: ≤85% Atmospheric pressure: 86~106kPa |



Bionline

BIONLINE S.R.L.
VIA DELLA MAGLIANA 422
00148 ROMA (ITALY)

TEL. +39 06 6690251
FAX +39 06 50653072

segreteria@bionlinesrt.com

