

# HYCOUNT 5 CRP

## 5-Part Auto Hematology Analyzer with CRP

### Technical Specification

#### Principles

Impedance method for RBC and PLT counting  
Cyanide free reagent for hemoglobin test  
Flow Cytometry (FCM) + Tri-angle laser scatter method for WBC 5-part differential analysis and WBC counting  
Latex-enhanced scattering Immunoturbidimetry for CRP test

#### Parameters

30 parameters: CRP, WBC, Lym%, Mon%, Neu%, Bas%, Eos%, Lym#, Mon#, Neu#, Eos#, Bas#, RBC, HGB, HCT, MCV, MCH, MCHC, RDW-CV, RDW-SD, PLT, MPV, PDW, PCT, LIC%, LIC#, ALY%, ALY#, NRBC#, NRBC%  
3 histograms for WBC, RBC and PLT  
3 DIFF scattergrams and 1 BASO scattergram

#### Reagent

DIL-C Diluent, LYD-1 LYSE, LYD-2 LYSE, CLE-P, CRP-R1, CRP-R2

#### Linearity Range

WBC (0.00-500.00)×10 <sup>9</sup> /L	RBC (0.00-8.50)×10 <sup>12</sup> /L
HGB (0-250)g/L	PLT (0-5000)×10 <sup>9</sup> /L
CRP (0.2-320.0)mg/L	HCT 0.0-67.0%

#### Repeatability

WBC ≤ 2.0%	RBC ≤ 1.5%	HGB ≤ 1.0%
PLT ≤ 4.0%	MCV ≤ 1.0%	

#### Sample Volume

20µL

#### Display

10.4 inch TFT Touch Screen

#### Throughput

Up to 60 samples per hour

#### Multi-language

Chinese, English, French, Russian available  
Spanish, Portuguese under planning

#### Data Storage Capacity

Up to 50,000 results including histograms can be saved

#### Communication

LAN port supports HL7 protocol

#### Interface

4 USB Ports, 1 LAN port

#### Printout

External Laser printer / Inkjet printer, various printout formats and user-defined formats

#### Dimension

364mm(L) × 495mm(W) × 498mm(H)

#### Net Weight

29.5KG



# Hycount 5 - CRP

## 5-Part Auto Hematology Analyzer with CRP

Hycel Handelsgesellschaft m.b.H.

Concorde Business Park 3/1, 2320 Schwechat, Austria

www.hycl-medical.com

contat@hycl-medical.com

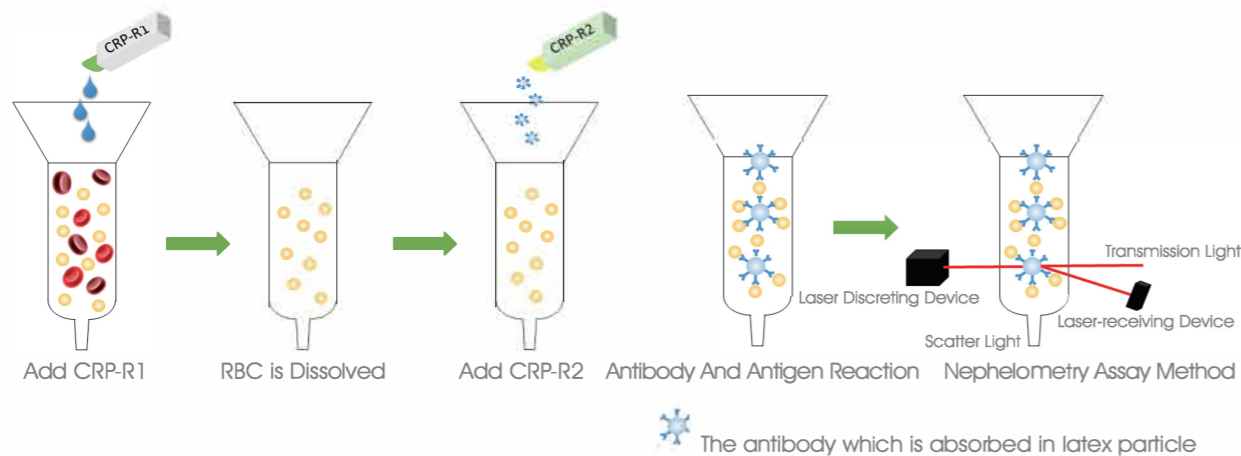
# Cutting-edge Technology in the Field.

It tests the CRP and WBC differentiation by whole blood through semi-conductor laser and Latex-enhanced scattering immunoturbidimetry as well as sheath fluid technology, which makes the routine blood test combined together with CRP.



## Latex-enhanced Scattering Immunoturbidimetry

- ▶ Make tiny latex particle connected with CRP antibody and get the contents of antigen through testing the change of the scattering assay. The sensitivity is smaller than 1mg /L including HS-CRP and regular CRP. Easy operation, test faster.

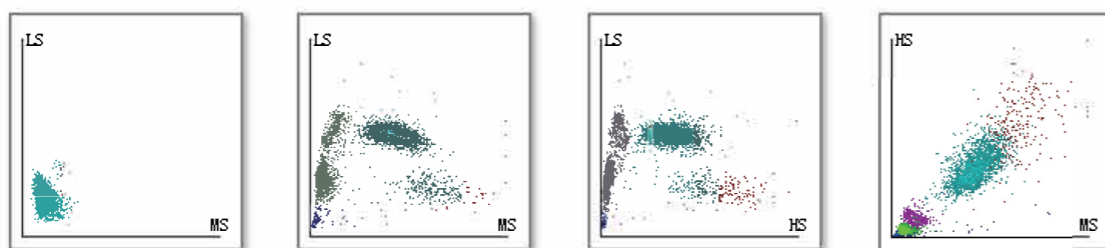


## Flow Cytometry and Impedance Method

- ▶ Impedance method for RBC and PLT counting, Cyanide-free reagent for testing hemoglobin concentration.

## Tri-angle Laser scatter Method

- ▶ Real double optical channel test, both for Diff and BASO. BASO channel with optical counting, more precise.

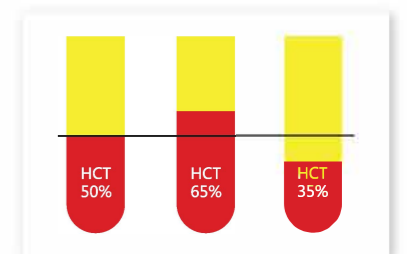


## FEATURES

- ▶ CBC+DIFF+CRP.
- ▶ Tri-angle Laser scatter+Flow cytometry technology+Latex-enhanced Scattering.
- ▶ Double optical counting channel both for WBC and basophil measurement.
- ▶ Venous whole blood, capillary whole blood and Pre-diluted modes.
- ▶ Powerful capability of flagging abnormal cells.
- ▶ 10.4 inch large TFT touch screen with user-friendly software.
- ▶ Large storage capacity, up to 50,000 samples.
- ▶ Throughput: up to 60 samples per hour.
- ▶ Low sample volume 20µL.
- ▶ Compact in size.
- ▶ High precision.
- ▶ Good repeatability.

## CLINICAL SIGNIFICANCE

- ▶ Built-in cooling system is specially for CRP reagent storage. Reagent can still be cooled after machine is powered off.
- ▶ The design of reagent room is smart, which is convenient for reagent positioning.
- ▶ Easy and Auto maintenance by probe cleanser.



HCT correction technology which helps to get high precision CRP result, ensuring same result for plasma and CRP.



Built-in CRP reagent cooling system